

RHONDA

Design: Luca Signoretti



Product description

Chair with frame in titanium (GFM11), bronze (GFM18), graphite (GFM69) or black (GFM73) embossed lacquered steel. Cover in fabric, micro nubuck, soft leather or synthetic leather as per sample card. The cover is not removable.

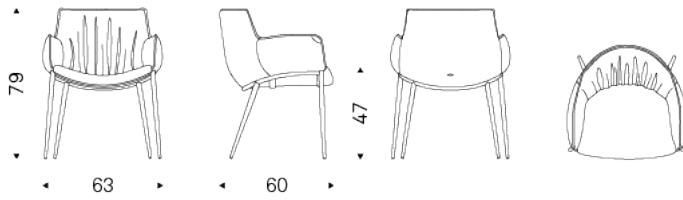
Note

REGISTERED DESIGN

RHONDA

Design: Luca Signoretti

Dimension

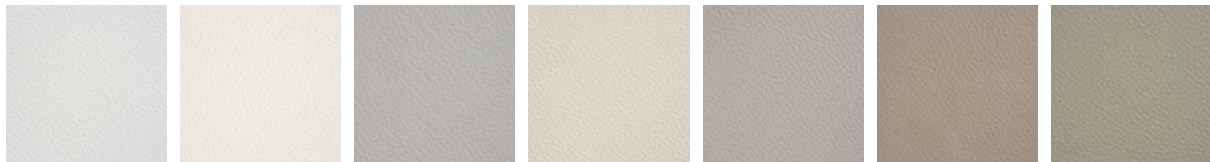


RHONDA

Design: Luca Signoretti

Finishes: seat

soft leather



971 BIANCO

937 PALLADIO

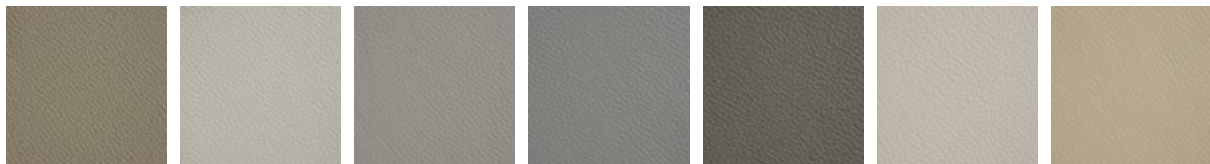
972 CANOVA

947 OYSTER

959 ICE

939 NYMPH

949 CENERE



951 CASTORO

993 ARTICO

938 DAKOTA

995 NARDÒ

983 ARGILLA

948 LINO

969 CASHMERE



945 SAFARI

950 TORTORA

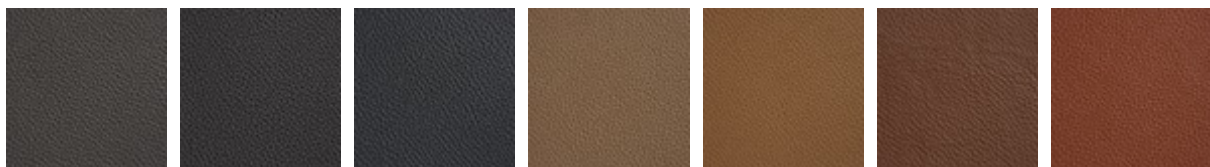
960 BRUNO

942 FANGO

946 MARRONE

988 TABACCO

952 SMOKE



953 ARDESIA

977 PIOMBO

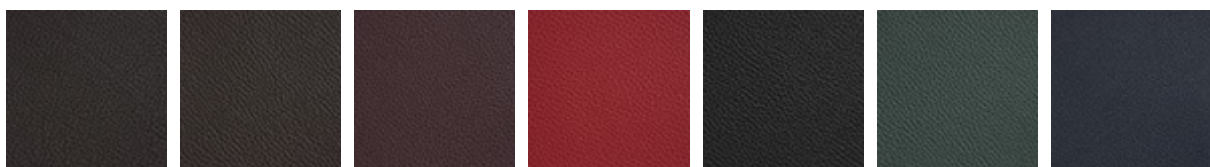
956 ATLANTICO

981 BISCOTTO

982 COGNAC

996 SIENA

994 CANYON



943 MOKA

891 TESTA DI
MORO

944 BORDEAUX

989 ROSSO
CORSA

973 NERO

987 SHERWOOD

940 NAVY

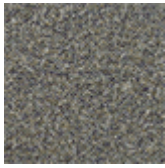


974 CAPRI

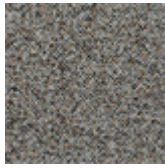
fabric



B220



B221



B222



B230



B231



B232



B233



B234



B235



B236



B238



B239



B401



B403



B405



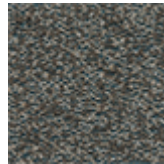
B420



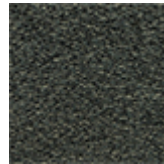
B421



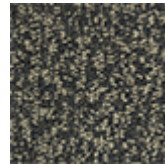
B422



B431



B433



B434



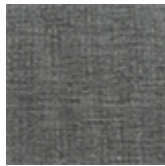
B435



B520



B521



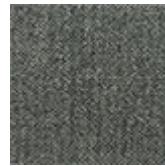
B522



B530



B531



B540



B541



B710



B711



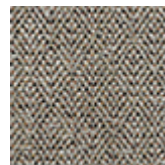
B712



B713



B714



B720



B721



B722



Bouclé 01

synthetic leather



micro nubuck

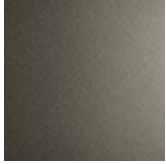


glove soft leather

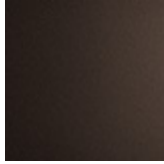


Finishes: frame

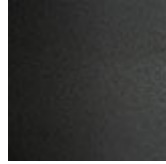
metal



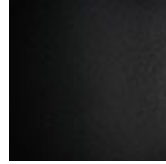
GFM11 titanium
embossed



GFM18 bronze
embossed



GFM69 graphite
embossed



GFM73 black
embossed