

ARCADIA Couture

Design: Paolo Cattelan



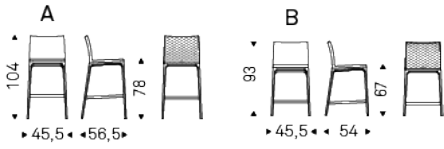
Product description

Stool with frame in natural beech (F1), Canaletto walnut (FNC), wenghè (FW) or black (OP17) stained beech. Cover in synthetic leather or soft leather as per sample card. Quilted seatback cover. The cover is not removable.

ARCADIA Couture

Design: Paolo Cattelan

Dimension



ARCADIA Couture

Design: Paolo Cattelan

Finishes: base

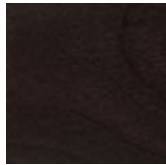
wood



F1 natural
stained beech



FNC walnut
canaletto
stained beech



FW dark wenghè
stained beech



OP17 matt black

Finishes: seat

soft leather



971 BIANCO

937 PALLADIO

972 CANOVA

947 OYSTER

959 ICE

939 NYMPH

949 CENERE



951 CASTORO

993 ARTICO

938 DAKOTA

995 NARDÒ

983 ARGILLA

948 LINO

969 CASHMERE



945 SAFARI

950 TORTORA

960 BRUNO

942 FANGO

946 MARRONE

988 TABACCO

952 SMOKE



953 ARDESIA

977 PIOMBO

956 ATLANTICO

981 BISCOTTO

982 COGNAC

996 SIENA

994 CANYON



943 MOKA

891 TESTA DI
MORO

944 BORDEAUX

989 ROSSO
CORSA

973 NERO

987 SHERWOOD

940 NAVY



974 CAPRI

synthetic leather



glove soft leather

