

ARCADIA Couture

Design: Paolo Cattelan



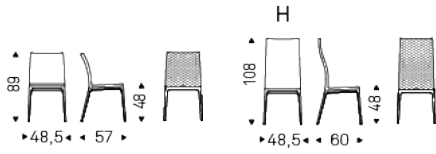
Product description

Chair with frame in natural beech (F1), Canaletto walnut (FNC), wenghè (FW) or black (OP17) stained beech. Cover in synthetic leather or soft leather as per sample card. Quilted seatback cover. The cover is not removable. (Stool version is available).

ARCADIA Couture

Design: Paolo Cattelan

Dimension



ARCADIA Couture

Design: Paolo Cattelan

Finishes: base

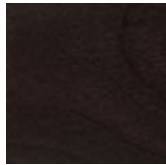
wood



F1 natural
stained beech



FNC walnut
canaletto
stained beech



FW dark wenghè
stained beech



OP17 matt black

Finishes: seat

soft leather



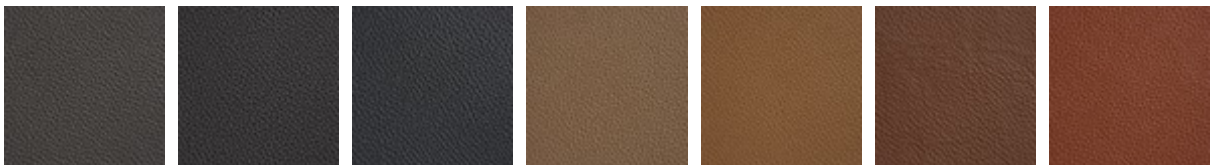
971 BIANCO 937 PALLADIO 972 CANOVA 947 OYSTER 959 ICE 939 NYMPH 949 CENERE



951 CASTORO 993 ARTICO 938 DAKOTA 995 NARDÒ 983 ARGILLA 948 LINO 969 CASHMERE



945 SAFARI 950 TORTORA 960 BRUNO 942 FANGO 946 MARRONE 988 TABACCO 952 SMOKE



953 ARDESIA 977 PIOMBO 956 ATLANTICO 981 BISCOTTO 982 COGNAC 996 SIENA 994 CANYON



943 MOKA 891 TESTA DI MORO 944 BORDEAUX 989 ROSSO CORSA 973 NERO 987 SHERWOOD 940 NAVY



974 CAPRI

synthetic leather



glove soft leather

